



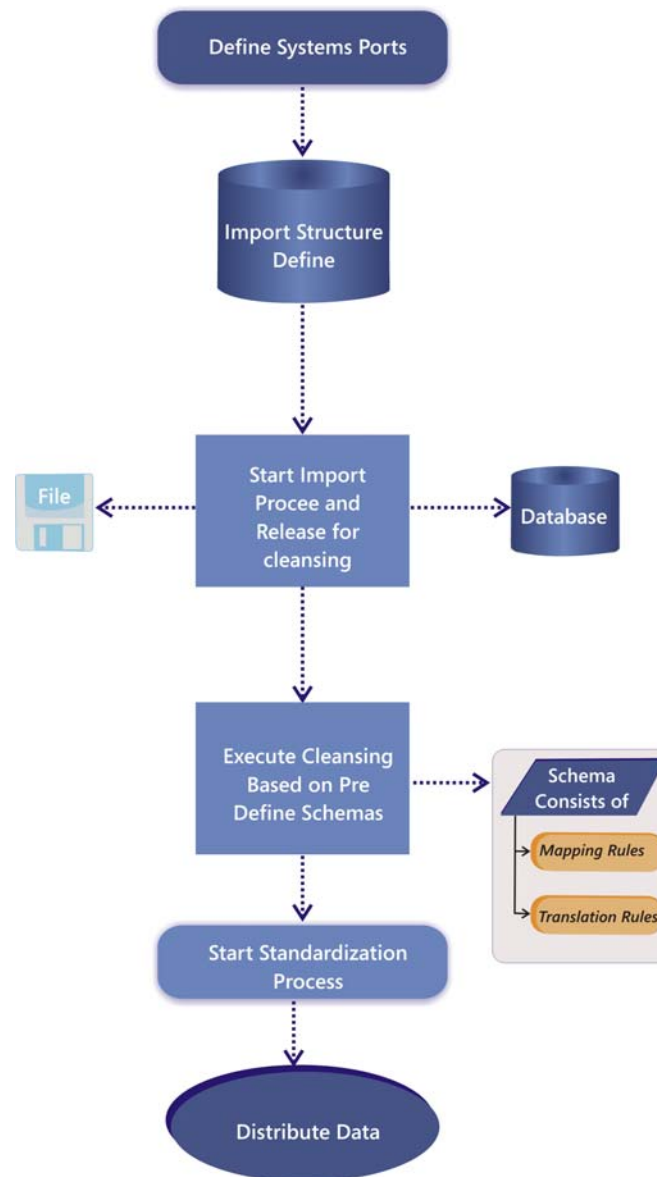
Master Data Online (MDO) – A Master Data Management Solution in Prospecta's growing solution suite manages the core business data in a consistent way across the organization, including business processes, governance and change management.

ERP systems such as SAP are now at a stage in its Product life cycle where the real value of the product can be realized. One of the key areas that are always a concern for ERP Customers is the quality of data existing in the system and the business value of this precious information.

One of the most important processes has become the management of Master Data. We all know the value of quality master data and the effects that it can have on our day to day transaction data. The MDO Client has all the required tools to harmonize and cleanse the data on a one time basis or on an ongoing basis. The older your ERP system gets, the harder it gets to clean the data. Cleansing is a process that needs active participation from the Business and the consultants who are working on the tool.

The Objective is to reduce the manual effort by providing various options and based on the reports, the Business can decide on the accuracy of the Master Data.

HIGH LEVEL PROCESS FLOW

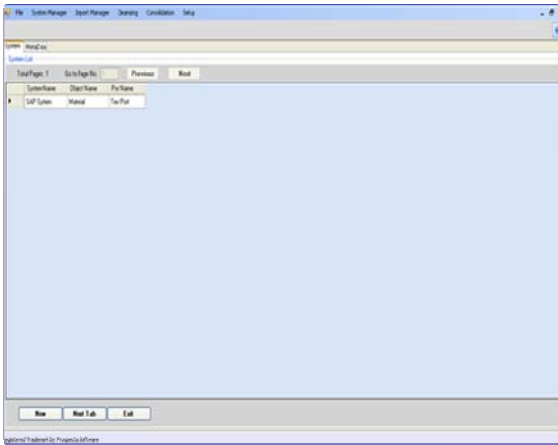


SYSTEM AND PORT MANAGEMENT

This is where the systems are defined and the ports for both importing and exporting data are defined. Multiple System definitions are managed here.

IMPORT MANAGER

The Import Manager is where the process starts in the MDO Client. Every System has modules and each module will have a Meta Data. The Meta Data becomes the destination.

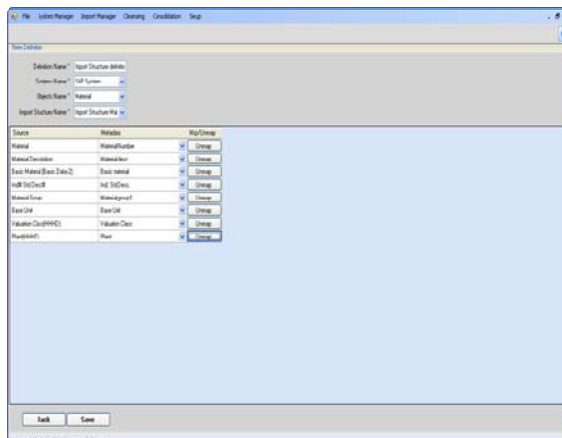
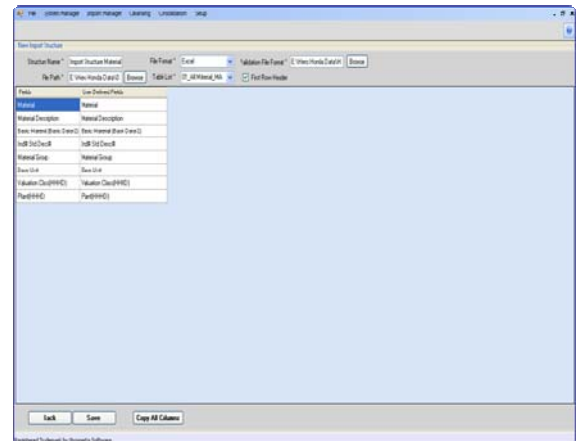


Import Structures

The Import Structures can be defined by the user as per his or her requirements. A Import structure can be based on a flat file, Excel or even a XML Schema. Import structure needs to be defined to do the initial upload in the MDO environment.

Meta Data Mapping

The Meta Data Mapping allows users to map the source data to the Meta Data Fields for the System Module. Basic Translations and default values can be done during this Mapping. For Example, the source Unit of Measure is KL, but the Meta Data allows KG. Mapping would be done to translate KL into KG.



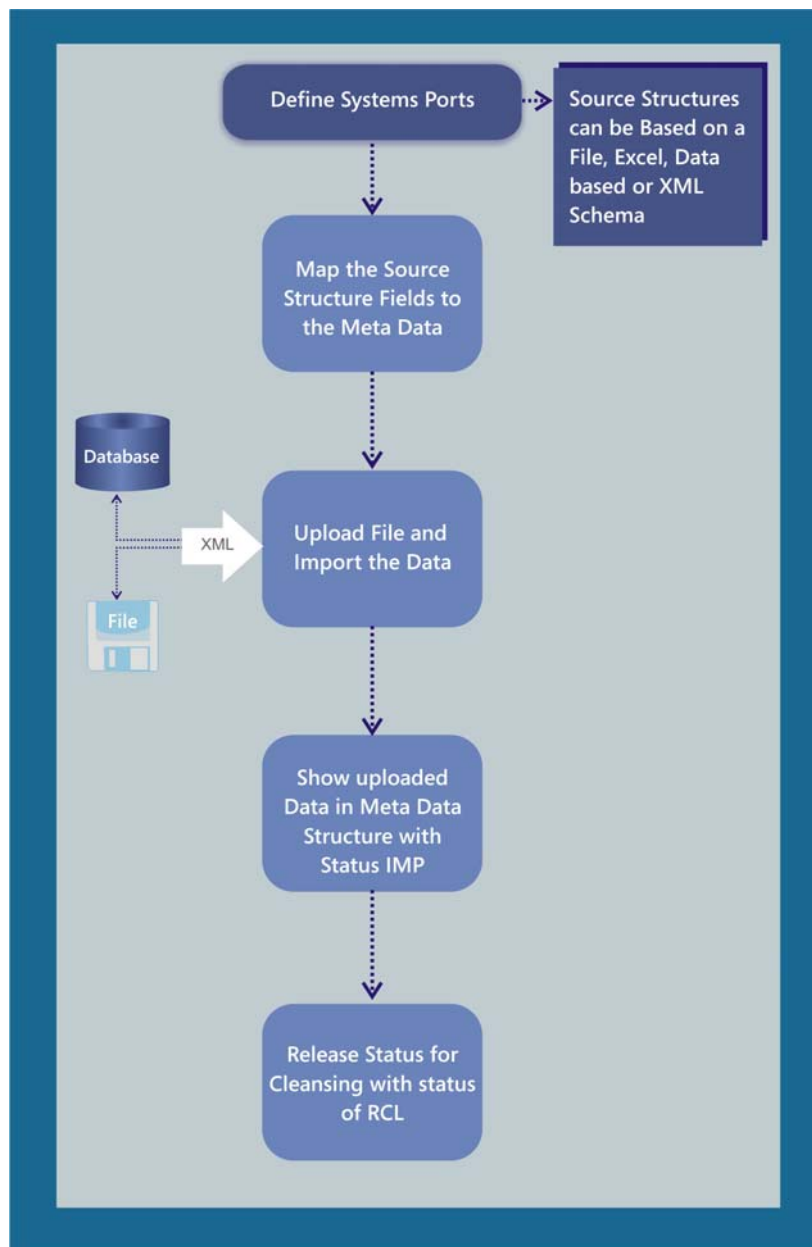
Version Management

Every File or data that is uploaded has a version against it and ensures that proper history is maintained from an audit and compliance point of view. This is a feature from various compliances such as SOX where data traceability during the cleansing process is very important.

Statuses

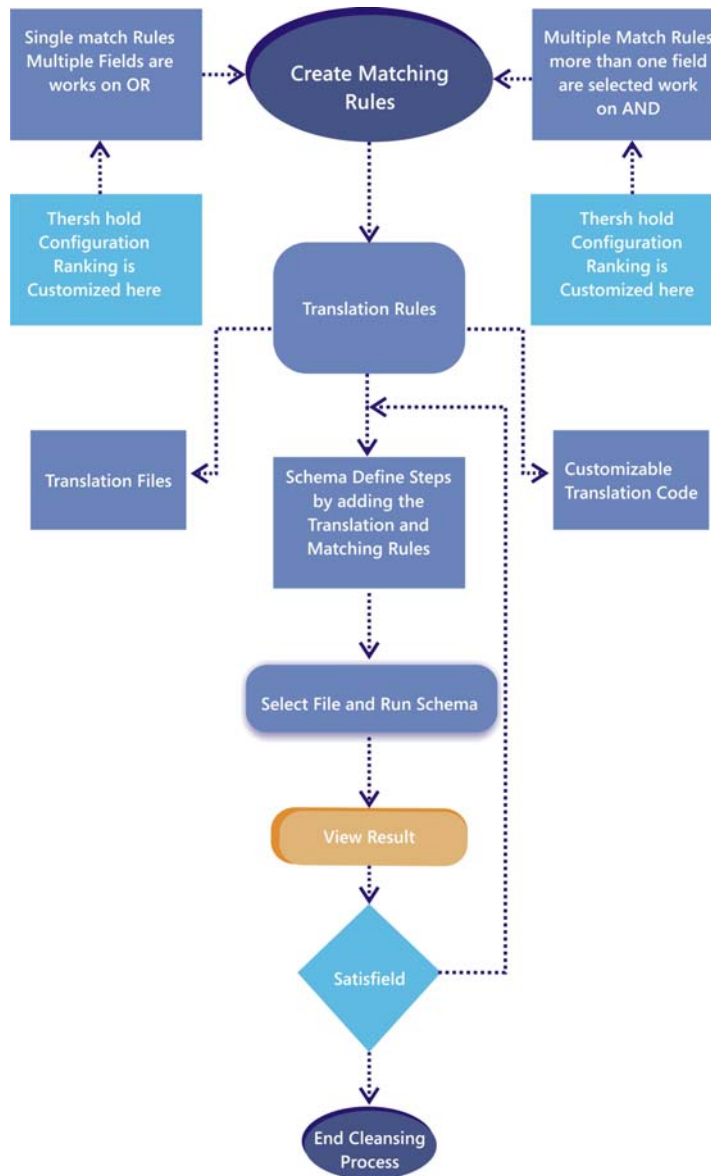
The Status Management allows managing view the current scenarios of the files that are being processed. These are the various statuses during the import of the file.

Action	Status
File	IMP
Released for cleansing Process	RCL



CLEANSING ENGINE

The Cleansing Engine is the most important part of the MDO Client. This is where the data goes through number of iterations based on various rules. The Rules are both configurable and also your own code can be put into practice to develop these rules.

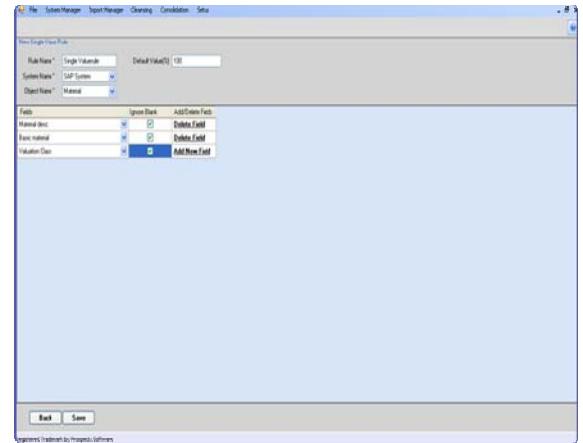


Schema			
Matching Rules		Translation Rule	
Single Match	Multiple Match	Replacements	Code
There hold configuration			

Matching Rules

The Matching Rules in the Cleansing Engine allows users to

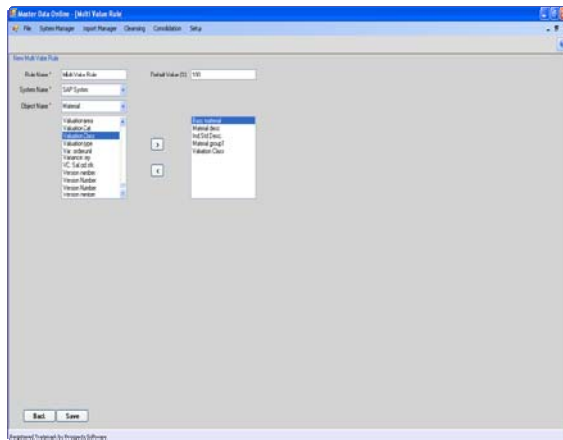
- Define Your Match Criteria
- Match Fields based on Single or Multiple Fields
- Matches can be done based on both OR and AND scenarios.
- All the Matches are weighted and ranked based on the



Translation Rules

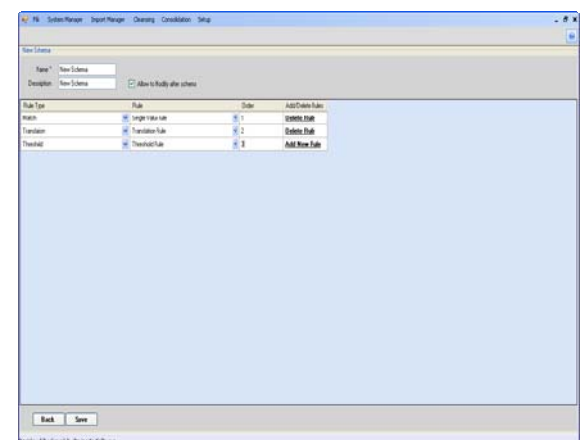
The Translation Rules are based on Pre defined replacement rules. These rules are stored in translation files.

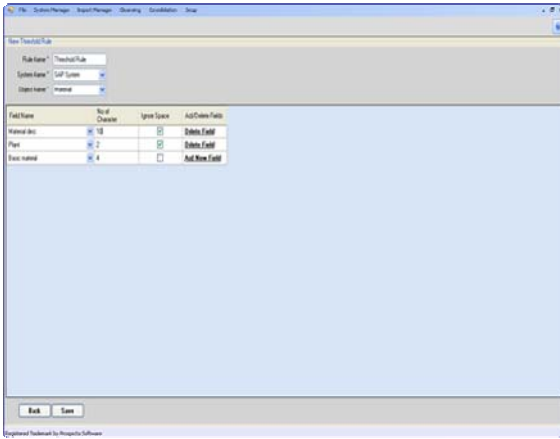
- Create or Upload Translation Files
- Capital Letter Adjustments
- Look Up Tables for Mapping and Translation.
- Code Development for Translation Rules.
- Non Technical Users can generate code to do translation rules.



Threshold Configuration

The Threshold Configuration allows users to set the percentages on ranking for matching. This is based on number of characters.





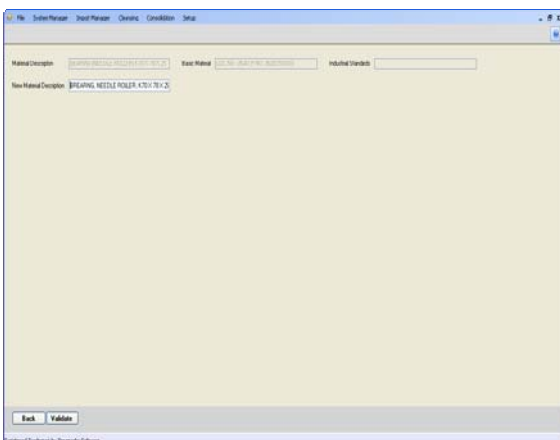
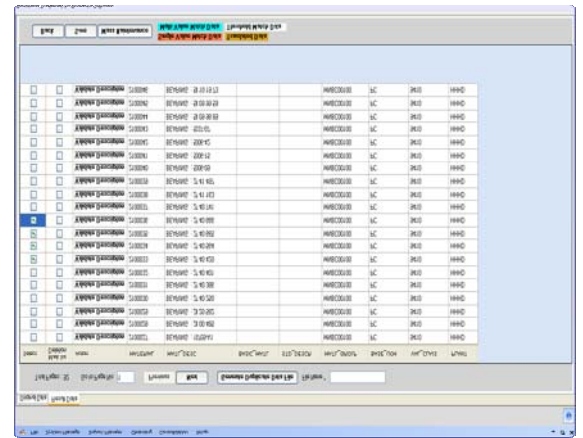
Schema

The Schema is where the sequence and dependency is managed for different rules. You can have multiple Translations and Matching Rules defined in the Schema.

- Sequencing of Rules
- Users can be provided specific access to run specific Schemas.
- Option of skipping rules when running with a Schema.
- Maintenance of Results manually can be defined in the Schema.

Mass Maintenance

The Mass Maintenance in the client allows users to manage multiple records in a very quick manner. Users can create their own templates to do mass maintenance.



STANDARDIZATION

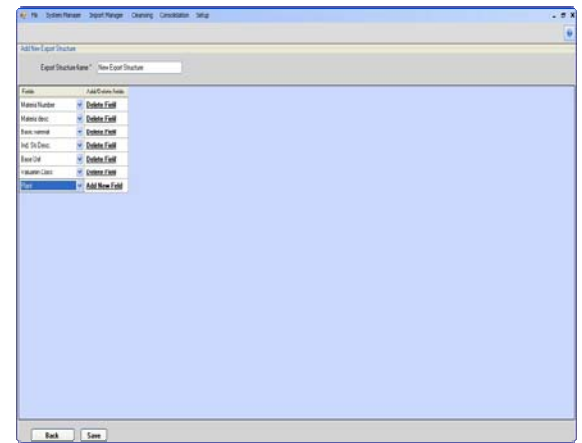
The Standardization step allows you to make sure that the business standards for master data is incorporated into the cleansed file. This Process is normally after all the activities are completed by the cleansing engine. The Key Features in Standardization are:

- Merging Cleansed Files together.
- Comparing Field to Field information between two systems and avoiding errors across systems. For Example, the Customer for a Bank has different information in his Savings and Loan Account.
- Find and Replace is done for standardization of data.
- Classification Standards such as UNSPSC can be maintained here.

EXPORT MANAGER

The Export Manager is that last step in the process where based on the export structures, the result is sent as an output to destinations defined in the Port configuration.

- Create your export structures
- Export Rules and Mapping
- Export Files generated
- Export Interfaces
 - XML
 - Adaptors
 - File Based



BUSINESS BENEFITS

The MDO solution delivers real benefits for your organization such as:

- Consistent, accurate quality data
- Master Data description based on Industry and Business rules
- Redundant data can be cleansed
- Significantly more efficient business through a complete view.
- Improved return on IT investment.
- Improved efficiency in change management processes.
- Helps in Governance of core business data.
- Tool for integration and legacy system conversion
- Results in accurate transaction data and stock levels.
- Low impact on employee turnover as training is simple and easy
- Reduce cost of ownership – Web Based and flexible screens.
- Greater customer information achieved by providing right information at the right time.

OTHER FEATURES

- Options for Manual and Automatic where the whole process from import to export is automated.
- Master Data can have a block flag for redundant data.
- Jobs can be scheduled to run large files.
- Authentication and logs are maintained for each action.
- Each cleansing run is maintained
- Archiving options are there for redundant data. Records may need to be archived as per the compliance rules.

Introduction

PROSPECTA

Prospecta Software is an SAP Services Partner and was established in the year 2002 with focus on building innovative complementary solutions to meet the business gaps across industry verticals. Prospecta works closely with its partners to ensure that its clients receive the best of services & solutions and build strong partnerships to offer complete solutions. Prospecta believes in valuing the partners as valuing the customers. Prospecta shares a very strong relationship with SAP across Asia Pacific Region.



Prospecta Soft Pvt. Ltd.

Prospecta House, K-2/5, DLF City, Phase II, Gurgaon – 122002
Phone: +91-124 - 4754500 / 4754534

Prospecta Software Australia Pty. Ltd.

Suite 507/5, Celebration Drive, Norwest Business Park, Baulkham Hills NSW 2153.
Phone: +61-2-8824-9749

For more information contact us at sales@prospectasoftware.com or visit us @ www.prospectasoftware.com